



## NOW WITH UL RECOGNITION

UL has officially recognized that Fuji's EL Relays operate precisely as outlined in the technical specifications – a level of approval above and beyond that of standard safety.

## Keep Ground Fault Problems Surrounded.

Fuji Electric's EL Series ground leakage relays provide effective early warning of insulation and motor problems before catastrophic failures and meltdowns can occur. The EL Series is available in a wide variety of threshold sensitivities, voltages and diameters to provide you with models for the protection of all your valuable machinery.

NOW AVAILABLE  
IN 24VAC/DC

## WIDE RANGE OF CONTROL VOLTAGES

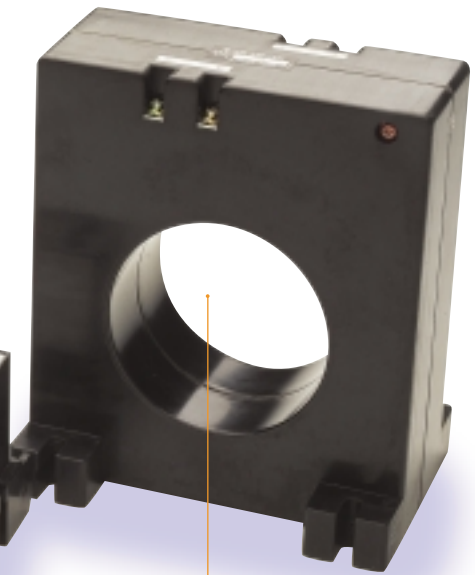
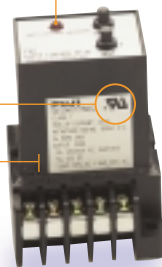
Choose from  
100/200VAC or  
120/240VAC.

## AVAILABLE IN SEVERAL SENSITIVITY RANGES

Select the  
appropriate range  
for your application  
from 30mA to 1A.

## EASY TEST FUNCTION

Test and reset controls are color-coded to conform with IEC regulations.



UNIFORM FOOTPRINT  
FOR ALL AMPLIFIERS

FIVE ZCT DIAMETERS

25, 40, 60, 90, and 115mm.



Recognized to UL1053



Meets LVD#IEC755,  
EMC#EN50081-2 & 82-2



Conforms to JIS#8374

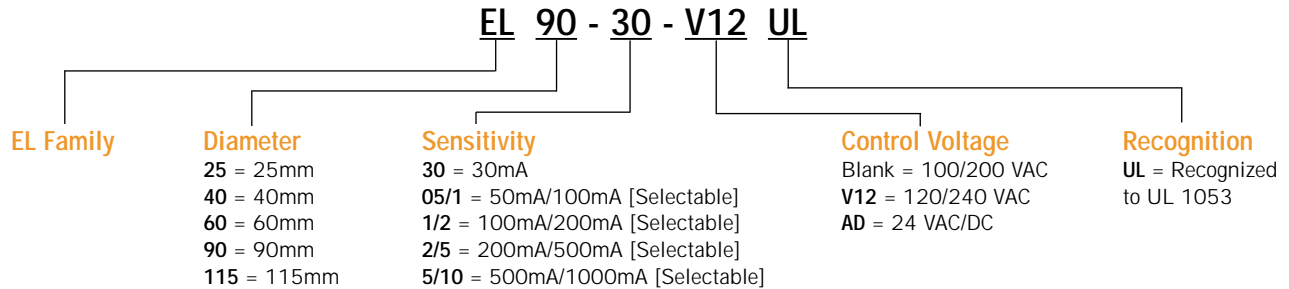
## PROTECT YOUR MACHINERY FROM EXTENDED DOWNTIME.

Manufacturing plants in industries from semiconductors to packaging use Fuji EL Relays to alert them to the types of ground fault problems that can jeopardize their valuable equipment – saving them time and money on costly repairs. It's time for you to take advantage of this extra level of protection before ground faults stop your equipment short.

## Product Availability

Diameter	Sensitivity	Part Numbers 24VAC/VDC Control	Part Numbers 100/200VAC Control	Part Numbers 120/240VAC Control
25mm	30mA [fixed]	EL25-30-ADUL	EL25-30UL	EL25-30-V12UL
	50/100mA [selectable]	EL25-05/1-ADUL	EL25-05/1UL	EL25-05/1-V12UL
	100/200mA [selectable]	EL25-1/2-ADUL	EL25-1/2UL	EL25-1/2-V12UL
	200/500mA [selectable]	EL25-2/5-ADUL	EL25-2/5UL	EL25-2/5-V12UL
	500/1000mA [selectable]	EL25-5/10-ADUL	EL25-5/10UL	EL25-5/10-V12UL
40mm	30mA [fixed]	EL40-30-ADUL	EL40-30UL	EL40-30-V12UL
	50/100mA [selectable]	EL40-05/1-ADUL	EL40-05/1UL	EL40-05/1-V12UL
	100/200mA [selectable]	EL40-1/2-ADUL	EL40-1/2UL	EL40-1/2-V12UL
	200/500mA [selectable]	EL40-2/5-ADUL	EL40-2/5UL	EL40-2/5-V12UL
	500/1000mA [selectable]	EL40-5/10-ADUL	EL40-5/10UL	EL40-5/10-V12UL
60mm	30mA [fixed]	EL60-30-ADUL	EL60-30UL	EL60-30-V12UL
	50/100mA [selectable]	EL60-05/1-ADUL	EL60-05/1UL	EL60-05/1-V12UL
	100/200mA [selectable]	EL60-1/2-ADUL	EL60-1/2UL	EL60-1/2-V12UL
	200/500mA [selectable]	EL60-2/5-ADUL	EL60-2/5UL	EL60-2/5-V12UL
	500/1000mA [selectable]	EL60-5/10-ADUL	EL60-5/10UL	EL60-5/10-V12UL
90mm	30mA [fixed]	EL90-30-ADUL	EL90-30UL	EL90-30-V12UL
	50/100mA [selectable]	EL90-05/1-ADUL	EL90-05/1UL	EL90-05/1-V12UL
	100/200mA [selectable]	EL90-1/2-ADUL	EL90-1/2UL	EL90-1/2-V12UL
	200/500mA [selectable]	EL90-2/5-ADUL	EL90-2/5UL	EL90-2/5-V12UL
	500/1000mA [selectable]	EL90-5/10-ADUL	EL90-5/10UL	EL90-5/10-V12UL
115mm	30mA [fixed]	EL115-30-ADUL	EL115-30UL	EL115-30-V12UL
	50/100mA [selectable]	EL115-05/1-ADUL	EL115-05/1UL	EL115-05/1-V12UL
	100/200mA [selectable]	EL115-1/2-ADUL	EL115-1/2UL	EL115-1/2-V12UL
	200/500mA [selectable]	EL115-2/5-ADUL	EL115-2/5UL	EL115-2/5-V12UL
	500/1000mA [selectable]	EL115-5/10-ADUL	EL115-5/10UL	EL115-5/10-V12UL

## Explanation of Part Numbering System



### FUJI ELECTRIC CO., LTD.

Gate City Ohsaki, East Tower 11-2  
Osaki 1-chome,  
Shinagawa-ku, Tokyo 141-0032, Japan  
Phone: Tokyo 3-5435-7136  
Fax: Tokyo 3-5435-7457  
Website: [www.fujielectric.co.jp](http://www.fujielectric.co.jp)

### FUJI ELECTRIC CORP. OF AMERICA

Park 80 West Plaza II  
Saddle Brook, NJ 07663  
Phone: 201-712-0555  
Fax: 201-368-8258

Information is subject to change without notice.  
Printed in U.S.A.  
1999 3M